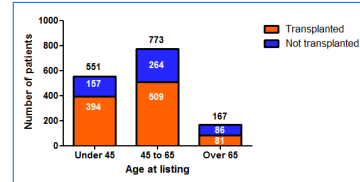


## Recipient Selection?

### Local Expansion of Donation After Circulatory Death Kidney Transplant Activity Improves Waitlisted Outcomes and Addresses Inequities of Access to Transplantation

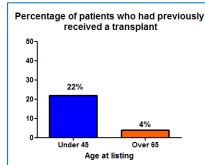
B. Mirshekar-Syahkal<sup>1</sup>, D. Summers<sup>1</sup>,  
L. L. Bradbury<sup>2</sup>, M. Aly<sup>1</sup>, V. Bardsley<sup>3</sup>, M. Berry<sup>4</sup>,  
J. M. Norris<sup>1</sup>, N. Torpey<sup>5</sup>, M. R. Clatworthy<sup>4</sup>,  
J. A. Bradley<sup>1</sup> and G. J. Pettigrew<sup>1\*</sup>

## Outcomes of all patients listed



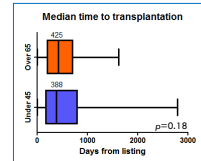
## Listed patient data

	Age under 45	Age over 65
Number of patients	551	167
Mean age at listing	34.4 (16.3-44.9)	67.9 (65.1-75.6)
Median length of follow-up (days)	1966 (0-3644)	1461 (25-3626)

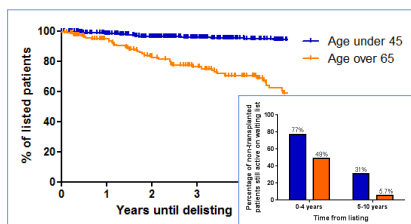


## Recipient data

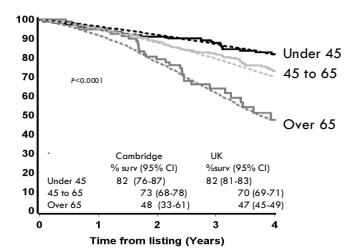
	Age under 45	Age over 65
Number of patients	394	81
Mean age at listing	34.3 (17.3-44.9)	67.6 (65.1-74.0)
Mean age at transplantation	35.9 (17.4-49.8)	68.9 (65.5-74.6)



## Rate of delisting

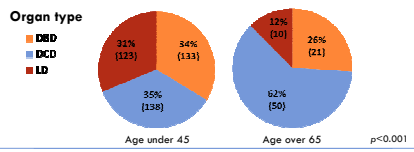


## National Trends

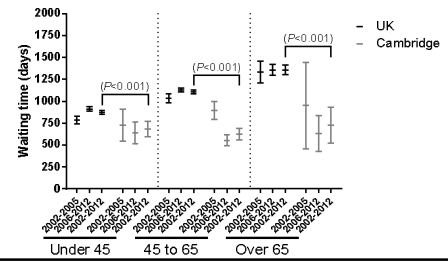


## Donor organ profiles

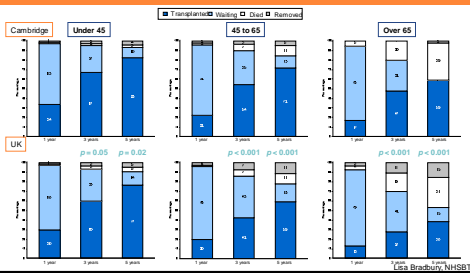
	Age under 45	Age over 65	p-value
Cold ischaemic time (hours)	14.4 (6.5-26.7)	14.4 (5.9-21.5)	ns
Donor age	43 (1-69)	61 (23-79)	<0.001
ECD donors	12%	63%	<0.001



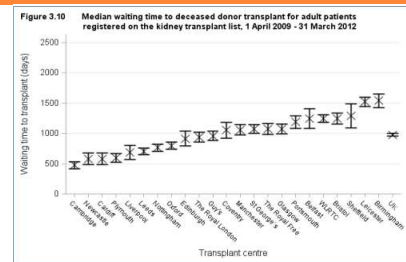
## Waiting times according to recipient age



## Patient Outcomes from Listing



## National Waiting Times



## Conclusions

- Increasing number of patients over 65 are being listed for transplantation
- Patients over 65 who are not transplanted within 4 years of listing are unlikely to remain active on the list
- Patients over 65 are more likely to receive older, DCD and ECD organs and less likely to receive LD kidneys